

FACT SHEET

INTERNATIONAL UNION FOR HEALTH PROMOTION AND EDUCATION (IUHPE)

Contact :
 42 BOULEVARD DE LA LIBERATION.
 93203 SAINT-DENIS CEDEX, FRANCE.
 TEL: +33 1 48 13 71 20 – FAX: +33 1 48 09 17 67 www.iuhpe.org iuhpe@iuhpe.org

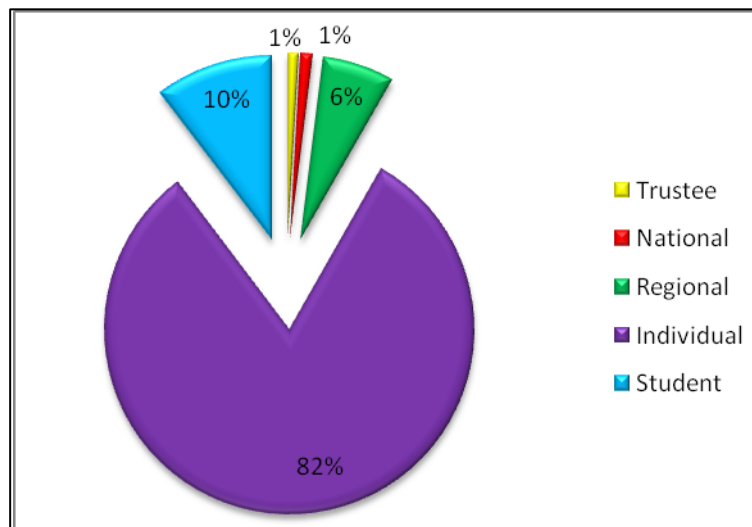
Year of foundation: 1951
Current President: David V. McQueen (United States)
Current Executive Director: Marie-Claude Lamarre
Annual turnover: ca. 1.1 million EUR (as per 2007)

Membership

In November 2009, the IUHPE had a total of 1940 members, consisting of trustees, national members, regional/local members, individual members and students. Trustees and national members only represent 2% of the IUHPE global membership while they contribute to the most part of the membership income. The strong base of IUHPE membership is made up of individuals and students who represent more than 90% of the members.

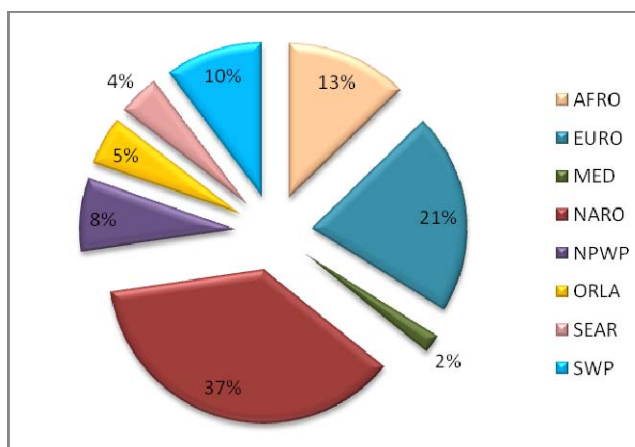
Membership totals by category on November 1st, 2009:

Trustee	17
National	21
Regional	122
Individual	1580
Student	200
TOTAL	1940



Membership totals by region on November 1st, 2009:

AFRO	246
EURO	411
MED	38
NARO	715
NPWP	149
ORLA	100
SEAR	84
SWP	197
TOTAL	1940



Membership totals by category and region on November 1st, 2009:

	Trustee	National	Regional	individual	Student	TOTAL
AFRO		1	12	215	18	246
EURO	10	11	64	265	61	411
MED	1			33	4	38
NARO	3	3	10	615	84	715
NPWP			9	129	11	149
ORLA	2	4	9	79	6	100
SEAR	1	1	4	74	4	84
SWP		1	14	170	12	197
TOTAL	17	21	122	1580	200	1940

Mission

The mission of the International Union for Health Promotion and Education (IUHPE) is to promote global health and wellbeing, and to contribute to the achievement of equity in health between and within countries of the world. The IUHPE fulfils its mission by building and operating an independent, global, professional network of people and institutions and by conducting collaborative projects, both at global and regional levels.

A global network of experts

The IUHPE is an open and inviting organisation, providing an international network that encourages the free exchange of ideas, knowledge and experience. Members range from government bodies, to universities and institutes, to NGOs and individuals across all continents.

In addition to providing its members access to a global network of professionals, the IUHPE offers a range of important services to keep our members connected and at the forefront of health promotion development. These services include www.iuhpe.org and the host of resources available at the website, professional conferences at regional and global levels, the IUHPE membership journal, discounted subscriptions to all the journals in the IUHPE family of journals and on-line dialogue at View of Health Promotion Online www.vhpo.net, amongst other services.

The IUHPE is a coordinating and facilitating agency of global health promotion and education projects and activities. Some of the projects are integral in the organization's work to advance and disseminate knowledge, such as the Global Programme on Health Promotion Effectiveness, and others are developed in partnership with key member institutions to meet priority needs and challenges in certain areas of work of common interest or for specific populations or countries of the world.

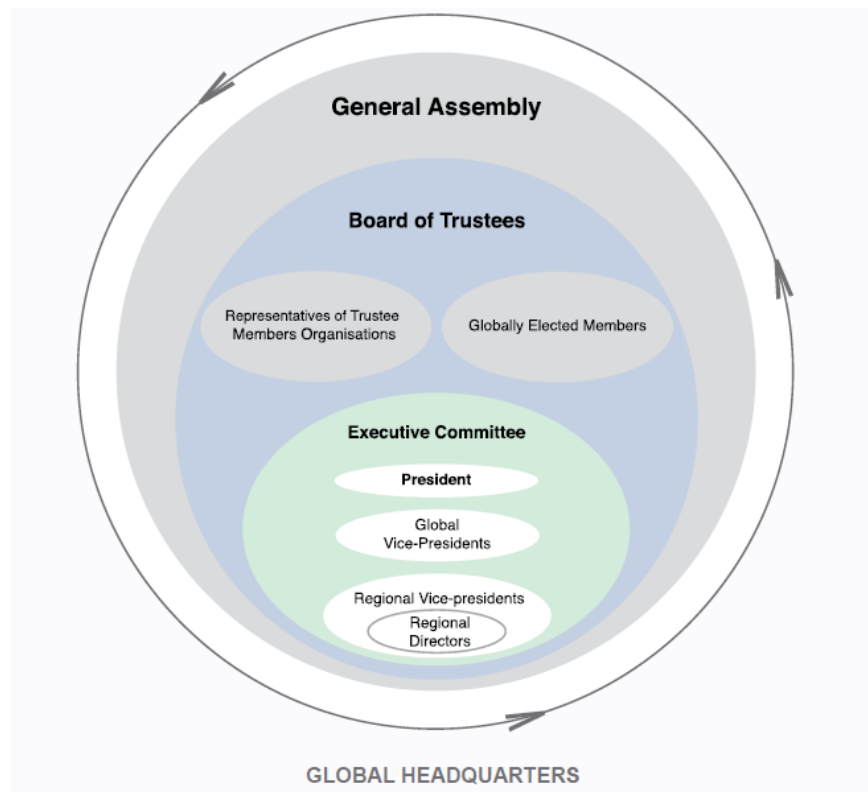
IUHPE Structure & Administration

The IUHPE is an independent, international, non-governmental, membership organisation. It is registered as a professional association under French law of 1901, which governs the operation and administration of all associations established in France.

The organisation is free from any political or religious affiliations, and does not discriminate on grounds of race, ethnicity, gender or religion.

The governing bodies of the IUHPE are the General Assembly, the Board of Trustees, the Global Executive Committee and Regional Committees.

Its administration is under the responsibility of the Headquarters, located in Paris, and the Regional Offices.



Activities

IUHPE **Advocacy** is committed to effectively utilising the organisation's global strength to put important topics on policy agendas, as well as the IUHPE's own agenda as expressed by member resolutions.

In order to build the workforce and institutionalise health promotion, **Capacity building, education and training** schemes are being developed on an international level, in areas where health promotion is less developed and as part of a pan-European initiative, all of which is outlined in the plan of the Vice-President dedicated to this area.

A **Communications** infrastructure has been put in place with complimentary mechanisms to share information and disseminate knowledge, and also to get members' voices heard. IUHPE **Conferences** continue to bring professionals together to take stock of knowledge and experience, and set the IUHPE agenda for scientific development of the field.

With the creation of a Vice-President for **Strategy & Governance**, the IUHPE can ensure that its governance arrangements are sound and effective, and that its strategic orientation responds to the rapidly changing world and its consequences on health.

Given the increasing reach and complexity of IUHPE work, its newly established Vice-President for **Partnerships & Institutional Affairs** is strengthening the existing IUHPE network of relationships and forging new ones.

This development coupled with the IUHPE's growing technical capacity and the range of **Scientific Activities**, demonstrate the commitments and innovative approaches to build health promotion and achieve equity in health globally in collaboration with specialised groups and networks, and programme partners.

Constitution (extracts)

Ratified by the IUHPE General Assembly on June 14, 2007

The IUHPE is an independent, international, non-governmental, membership organisation. It is free from any party political or religious affiliations, and does not discriminate on grounds of race, ethnicity, gender or religion.

STRUCTURE

The governing bodies of the IUHPE are the General Assembly, the Board of Trustees, the Global Executive Committee and Regional Committees. The administrative units are the Headquarters and the Regional Offices.

Its legal domicile is fixed in France.

MISSION

The mission of the IUHPE is to promote global health and to contribute to the achievement of equity in health between and within societies of the world. The IUHPE fulfils its mission by building and operating an independent, global, professional network of people and institutions to encourage the free exchange of ideas, knowledge, knowhow, and experiences, and the development of relevant collaborative projects, both at global and regional levels.

GOALS

The IUHPE has three major goals:

- to advocate for health ;
- to improve effectiveness ;
- to build capacity.

OBJECTIVES

The IUHPE will pursue these goals by:

- advocating for investment in health promotion and health education by governments , intergovernmental organisations, non-governmental organisations and the private sector of society ;
- undertaking activities that contribute to the development of knowledge and practice which further the field of health promotion and health education ;
- disseminating evidence-based knowledge and practical experience in health promotion and health education ;
- providing mechanisms for the exchange of ideas, experience and knowledge that promote health ;
- providing a global forum for mutual support and professional advancement of its members ;
- building alliances and partnerships amongst all sectors, based on agreed ethical principles, mutual understanding and respect ;
- strengthening the capacity of the organisation to fulfill its mission.

PURPOSE

The purpose of the IUHPE is to fulfill its mission, goals, and objectives as set out in article 2. For this the IUHPE seeks:

- 1) to advocate for actions that promote the health of populations throughout the world by :
 - gathering and presenting the evidence to enable advocacy to be conducted by the organization on a range of issues of international significance ;
 - providing consultation to governments and organisations about the implementation of effective health promotion policies, strategies, and structures ;
 - assisting countries to develop and improve their national institutions for health promotion and health education ;
 - promoting the development of informed public opinion on matters relating to health.
- 2) to improve and advance the quality and effectiveness of health promotion and health education practice and knowledge by :
 - contributing to the professional development of health promotion and health education practitioners, and to the development of the range, quality and effectiveness of health
 - promotion and health education across the world ;
 - conducting technical activities with a particular focus on synthesising and disseminating information about effective practice across the world.
- 3) to contribute to the development of capacity in countries to undertake health promotion and health education activity by :
 - strengthening the networks of people and institutions involved in health promotion and health education throughout the world, and creating new ones when need arises ;
 - developing partnerships that will enable the organisation to increase its active role in health promotion and health education in the international arena ;
 - maintaining constant relations with the World Health Organisation, UNESCO, UNICEF, and other international organisations for the advancement of health promotion and health education throughout the world.

MEANS

These actions are pursued by:

- developing and sustaining networks;
- organising periodic international conferences, and regional meetings or seminars; developing and managing projects in keeping with IUHPE goals and objectives; producing periodical and other publications;
- preparing and publishing position statements on effective practice, training standards and infrastructure development ; and any other appropriate means.

MEMBERSHIP

The IUHPE comprises the following membership categories:

Trustee Members

Trustee Members are organisations of national scope which are responsible for organizing and/or supporting health promotion and health education in their country, state, province, region, or equivalent level.

Institutional Members

Institutional Members are organisations of international, national, subnational or local scope, among whose main purposes is to undertake, teach, research or promote one or more aspects of health promotion and health education, which focus on specific themes, target groups, or settings.

Individual Members

Individual Members are individuals who support the mission, goals, and objectives of the IUHPE.

Honorary Members

An individual or organisation who makes a special contribution to the mission of the IUHPE, or to the development of its goals and objectives may be invited to be an honorary member.

The rights, privileges, and duties of the members are laid down in the Bye-Laws.

GENERAL ASSEMBLY

The General Assembly is composed of IUHPE members. ...

Ordinary sessions of the General Assembly are convened by the President at a meeting held concurrently with each World Conference. Extraordinary sessions or consultations can be held at the request of the Board of Trustees or of the Executive Committee.

The General Assembly is the ultimate governing body of the IUHPE and is invested with all powers necessary for the furtherance of the IUHPE's aims, in particular :

- a) it decides the policies and the strategic directions of the IUHPE;
- b) it appoints an Honorary President, to advise and serve permanently with the IUHPE, selected from among former Presidents of the IUHPE or personalities whose services to the IUHPE warrant their election to such functions;
- c) it receives for discussion and approval reports on the activities, membership, finances, and any other significant business of the IUHPE, since the previous ordinary and any extraordinary session of the General Assembly;
- d) it approves amendments to the Constitution as laid down in Article 29 ;
- e) it decides the location of future World Conferences based on the recommendations of the Board of Trustees;
- f) it completes the agenda it agreed at the outset of the session.

BOARD OF TRUSTEES

The Board of Trustees comprises :

- the President, elected by the Board of Trustees for a term of three years, from among its elected members, at an extraordinary session of the incoming Board of Trustees, immediately following the completion of the election of that Board. A President thus elected shall be eligible to stand for reelection for only one further term.
- the immediate past-President ;
- a maximum of forty global members, elected by the General membership with due consideration given to the reflecting geographical distribution of the members of the IUHPE.
- an accredited representative of each trustee member sitting ex-officio;
- the Regional Vice-Presidents elected by Regional constituencies;
- the Regional Directors appointed by Regional constituencies;
- individuals appointed by the Board of Trustees to fill vacancies in global membership until the next ordinary session of the General Assembly.

The Board of Trustees governs and administers the IUHPE on behalf of the General Assembly.

The Board of Trustees meets in ordinary session at least once a year.

GLOBAL EXECUTIVE COMMITTEE

The Global Executive Committee of the Board comprises the President, Vice-Presidents (Global and Regional).

At its first ordinary session following the General Assembly, the Board elects global Vice-Presidents to hold office until the following meeting of the General Assembly. Following such election by the Board, they are eligible to be reelected to the same office on only one further consecutive occasion.

THE PRESIDENT

The President presides at all meetings of the Global Executive Committee, Board of Trustees and General Assembly. S/he represents the IUHPE in its relations with other institutions and the authorities of all countries. S/he represents the IUHPE in law and in all civil acts, and ensures the general supervision of the work of the Headquarters, normally by delegation to the Vice President for Coordination, Administration and Membership Services, or to another Vice President, or by other means where appropriate. In the interval between sessions of the General Assembly, and of the Board of Trustees, and of the Executive Committee, or when it is impossible for them to meet owing to exceptional circumstances, the President is authorized to take any urgent measures, including the approval of extraordinary expenditure not included in the budget approved by the Board of Trustees. S/he is responsible for giving an account of such measures at the next meeting of the group(s) in question.

VICE PRESIDENTS

Having been elected by the Board of Trustees, or Regional constituencies, as provided for in Articles 8 and 23, Vice Presidents have functions set out below: Each Region will be represented by a Vice President who shall represent the Region in all meetings within and outside the IUHPE and ensure the general supervision of the work of the Regional Office. In addition, the IUHPE shall establish nine positions of Vice President with specific responsibilities in the following areas:

- Administration
- Advocacy
- Capacity building, education and training
- Communications
- Conferences
- Finance and internal control
- Organisation of the World Conference
- Partnership and institutional affairs
- Scientific Affairs
- Strategy and Governance.

THE EXECUTIVE DIRECTOR

The Executive Director coordinates and manages the global functions of the IUHPE. S/he is responsible to the Vice President for Coordination, Administration and Membership Services under delegation of the President, for implementing the decisions of the General Assembly, Board of Trustees and Global Executive Committee. The Executive Director is appointed by the Executive Committee, on behalf of the Board of Trustees. Her/his responsibilities are detailed in Annex C of the Bye-Laws.

MEETINGS

The Global Executive Committee meets in ordinary session at least once a year. Extraordinary sessions of the Executive Committee shall be held on the initiative of the President or at the request of half of its membership. The President is authorized to consult the Executive Committee should s/he judge it impractical to call an extraordinary session.

FINANCIAL YEAR AND FEES

The financial year is for the 12 months ending on the 31 December. Each member required to do so must pay an annual membership fee to the IUHPE according to a scale adopted by the Board of Trustees. If a member without due reason fails to pay her/his due membership fee, the IUHPE shall terminate membership according to the arrangements set out in the Bye-Laws. The Board of Trustees and General Assembly are notified of the termination of any national trustee membership.

AMENDMENTS OF THIS CONSTITUTION

This Constitution is the ultimate governing document of the IUHPE. It may only be amended by the General Assembly of the IUHPE.